

ellen
wille
THE HAIR YOU LOVE

Top Power

BY ELLEN WILLE

Top Power by ellen wille



Top Power

BY ELLEN WILLE

ellen
wille
THE HAIR YOU LOVE

www.ellen-wille.de

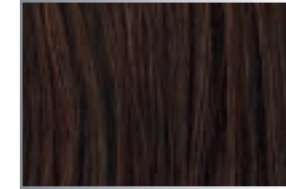
Top Power

BY ELLEN WILLE

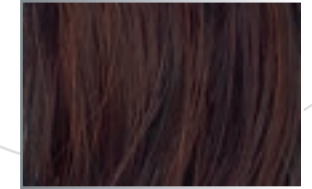
HUMAN HAIR



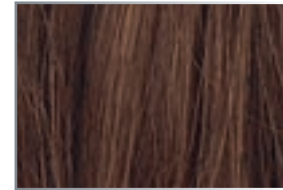
black
1.2



espresso
4.2



darkchocolate
6.33.4



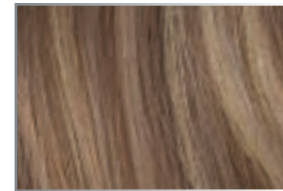
chocolate
830.6



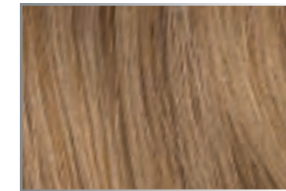
nougat
8.12.20



mocca
830.12.27



bernstein
12.830.26



lightbernstein
12.26.27



sand
14.26.20



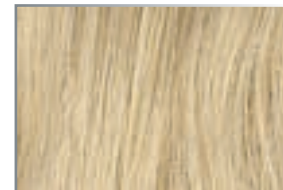
sandmulti
14.22.20



sandyblonde
20.22.16



champagne
22.26.16



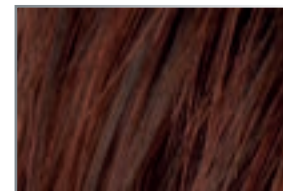
pastelblonde
25.22.26



pearlblonde
101.25.60



naturewhite
60.101



dark winered
33.4

TOP DESIGN. TOP QUALITY. HAIR TOPPER!

De Top Power bietet Volumen und Fülle bei feinem Haar. Die Modelle sind ready-to-wear und in einer großen Auswahl natürlicher Haarfarben verfügbar. Stil und Klasse im Handumdrehen. Im aktuellen Katalog sind die Hair Topper nach individuellen Bedürfnissen an Volumen sortiert. Leicht zu finden, einfach ins natürliche Haar zu integrieren. In jeder Hinsicht Top Power!

Es Top Power ofrece volumen y plenitud para el cabello fino. Los modelos están listos para usar y disponibles en una amplia gama de colores naturales. Con buen gusto y con mucha clase en un abrir y cerrar de ojos. En el catálogo actual, hemos clasificado los hair toppers según el volumen de cabello deseado. Fáciles de encontrar, fáciles de integrar en tu propio cabello. Una colección Top Power en todos los sentidos.

It Top Power dona volume e densità ai capelli sottili. I modelli sono „ready to wear“, pronti per essere indossati, e sono disponibili in un'ampia gamma di colori naturali. Stile e classe in un istante. Nel catalogo attuale vengono ordinati in base alla tipologia di capello. Facili da indossare e facili da integrare con i propri capelli. Il massimo dell'efficacia sotto ogni punto di vista!

En Top Power offers volume and fullness for fine hair. The models are ready-to-wear and available in a wide range of vivid hair colours. Style and class in an instant. In the new catalogue, the hair toppers are categorized according to individual needs of volume. Easy to find, easy to integrate into the natural hair. Top Power in every respect!

Fr Les volumateurs de la collection Top Power redonnent du gonflant et de la forme aux cheveux fins. Les modèles sont prêts à porter et disponibles dans un grand choix de couleurs naturelles. Retrouvez en un clin d'œil style et élégance. Dans le nouveau catalogue, les volumateurs sont classés en fonction de la densité du volume. Faciles à trouver, ils se fixent et s'intègrent simplement à la chevelure. Une collection en top forme !

Ru Top Power придаст объём и густоту тонким волосам. Модели готовы к носке и представлены в широкой палитре натуральных цветов. Стильная причёска в мгновение ока. В актуальном каталоге топперы отсортированы в соответствии с индивидуальными требованиями к объёму. Легко найти, легко интегрировать в натуральные волосы. TOP во всех отношениях!

4

De Die Early-Stage-Solutions sind optimal für feines Haar. Die leichtgewichtigen, kleinen Hair Topper sorgen für Fülle und vitales Volumen bei lichter werdendem Haar im Bereich des Ponys oder des Scheitels. Die Modelle sind ready-to-wear und lassen sich ganz mühelos ins eigene Haar integrieren.

Es Las soluciones early-stage son óptimas para el cabello fino. Estos toppers capilares pequeños y ligeros proporcionan plenitud y volumen para el cabello fino en la zona del flequillo o de la raya. Los modelos están listos para usar y pueden colocarse sin esfuerzo en el propio cabello.

It Early-stage solutions sono ideali per i capelli sottili. Topper leggeri e di piccole dimensioni, che forniscono pienezza e volume nella zona della coda o della riga. Tutti i modelli sono „ready to wear“, pronti da indossare, e si integrano facilmente nella propria capigliatura.

En The early-stage solutions are optimal for fine hair. The lightweight, small hair toppers provide fullness and vital volume for thinning hair in front or parting area. These models are ready-to-wear and can be integrated effortlessly into your own hair.

Fr Ces modèles sont idéaux pour les cheveux fins. Les petits hair toppers très légers donnent de la densité et du volume notamment au niveau de la frange ou de la raie. Les modèles sont prêts à porter et se fixent facilement en se dissimulant dans vos propres cheveux.

Ru Модели категории early-stage solutions идеально подходят для тонких волос. Легкие, маленькие топперы обеспечивают густоту и естественный объем редящим волосам в области челки или пробора. Модели готовы к носке и могут быть легко интегрированы в ваши собственные волосы.



Beginning

Early-stage Solutions

☆☆☆☆
Add In

REMY HUMAN HAIR



Size: 7 x 16 cm • Length: 30 - 38 cm

espresso mix • darkchocolate mix • **chocolate mix** • mocca mix • bernstein rooted •
sand rooted • sandyblonde rooted • champagne mix

Add In



Just

HIGH HEAT FIBER



Size: 8 x 14 cm • Length: 23 - 26 cm

espresso mix • darkchocolate mix • chocolate mix • mocca mix • bernstein rooted • sand mix • **sandyblonde rooted** • pearlblonde mix • champagne mix • auburn rooted • salt/pepper mix • stonegrey mix • pearl rooted • silver mix

HI
HEAT
HIGH HEAT
FIBER



Just

☆☆☆☆)

Just Long

HIGH HEAT FIBER



Size: 8 x 14 cm • Length: 38 - 40 cm

espresso mix • darkchocolate mix • chocolate mix •
mocca mix • **bernstein rooted** • sand mix • sandyblonde rooted •
pearlblonde mix • champagne mix • auburn rooted •
salt/pepper mix • stonegrey mix • pearl rooted • silver mix

HI
HEAT
HIGH HEAT
FIBER

Just
Long

10

11

☆☆☆☆)

Impact

REMY HUMAN HAIR



Size: 9 x 13 cm • Length: 40 - 45 cm

black • espresso mix • darkchocolate mix • chocolate rooted • **nougat mix** •
bernstein rooted • sandyblonde rooted • champagne rooted •
pastelblonde mix • dark winered mix



Impact

☆☆☆☆)

Fill In

REMY HUMAN HAIR



Size: 8 x 14 cm • Length: 26 - 28 cm

espresso mix • darkchocolate mix • chocolate mix • mocca mix • bernstein rooted •
sand mix • **sandyblonde rooted** • champagne rooted



Fill In

☆☆☆☆) **Couture**

HIGH HEAT FIBER



Size: 7 x 17 cm • Length: 28 - 30 cm

espresso mix • darkchocolate mix • chocolate rooted • mocca rooted •
lightbernstein rooted • sandyblonde rooted • pearlblonde rooted •
lightchampagne rooted • auburn rooted • salt/pepper mix • silver mix

HI
HEAT
HIGH HEAT
FIBER

Couture



Fun

HIGH HEAT FIBER



Size: 13 x 6 cm • Length: 12 - 24 cm

black • espresso mix • darkchocolate mix • chocolate mix • mocca rooted • lightbernstein rooted • **sandmulti rooted** • sahara beige mix • sandyblonde rooted • champagne rooted • pastelblonde mix • auburn rooted • salt/pepper mix • stonegrey mix • pearl rooted • snow mix • white mix



Fun

20

De Die Moderate-Stage-Solutions sind die ideale Lösung bei schütterem Haar. Die mittelgroßen Hair Topper sorgen für spürbar mehr Fülle und Volumen im Bereich des gesamten Oberkopfes. Die Modelle lassen sich unkompliziert befestigen und bilden mit dem eigenen Haar ein harmonisches und natürliches Gesamtbild.

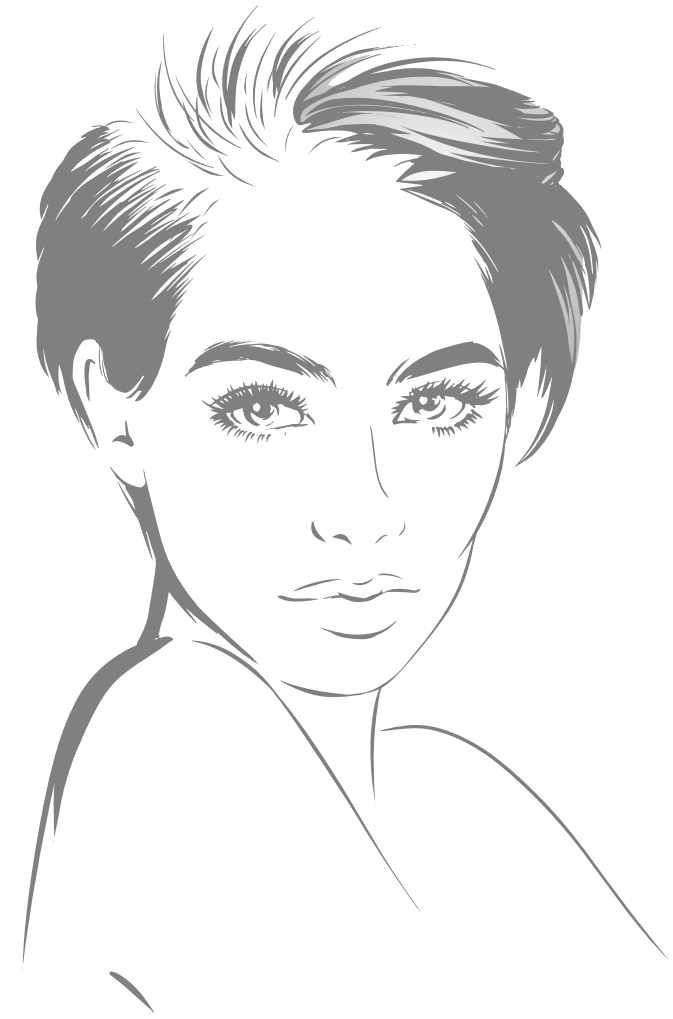
Es Las soluciones moderate-stage son ideales para personas con cabello delgado. Estos toppers capilares de tamaño medio proporcionan notablemente más plenitud y volumen en la zona de toda la parte superior de la cabeza. Los modelos son fáciles de colocar y forman un conjunto armonioso y natural con tu propio cabello.

It Moderate-stage solutions sono ideali per i capelli diradati. Questi topper forniscono pienezza e volume soprattutto nella parte alta della testa. Sono facili da applicare e donano un aspetto armonioso e naturale integrandosi perfettamente con i propri capelli.

En The moderate-stage solutions are the ideal choice for thinning hair. The medium-sized hair toppers provide noticeably more fullness and volume in the entire top of head area. The models can be attached easily and build a harmonious and natural overall look with your own hair.

Fr Ces modèles apportent la solution adéquate aux cheveux clairsemés. Les hair toppers de taille moyenne donnent de la densité et du volume sur tout le dessus de tête. Ils sont faciles à fixer et embellissent votre chevelure tout en respectant son apparence naturelle.

Ru Модели категории moderate-stage solutions – идеальное решение для истонченных волос. Топперы среднего размера придают заметно большую густоту и объем в области всей макушки. Модели легко крепятся и образуют гармоничный и естественный облик с собственными волосами.



21

Mid-stage

Moderate-stage Solutions



Value

REMY HUMAN HAIR



Size: 17 x 17 cm • Length: 12 - 16 cm

espresso mix • darkchocolate mix • chocolate mix • mocca mix •
lightbernstein rooted • sand mix • **sandyblonde rooted** •
champagne rooted



Value

☆☆☆☆
Top Mono

SYNTHETIC HAIR



Size: 17 x 16 cm • Length: 12 - 14 cm

espresso mix • chocolate mix • bernstein mix • sand mix • caramel mix •
champagne mix • **smoke mix** • snow mix • silver mix

SH
SYNTHETIC
HAIR

Top
Mono



Real

PRIME HAIR



Size: 13 x 17 cm • Length: 16 - 20 cm

espresso mix • darkchocolate mix • chocolate mix •
bernstein rooted • sand mix • champagne rooted •
smoke mix • naturewhite mix

Real

☆☆☆☆)
Lace Top

SYNTHETIC HAIR



Size: 16 x 16 cm • Length: 10 - 14 cm

espresso mix • chocolate mix • nougat rooted • mocca rooted •
bernstein rooted • caramel rooted • sandyblonde rooted •
champagne rooted • auburn rooted • stonegrey mix • pearl mix • silver mix



Lace
Top



Magic

FINEST HUMAN HAIR



Size: 14 x 17 cm • Length: 20 - 23 cm

espresso mix • darkchocolate mix • chocolate mix • mocca mix •
lightbernstein rooted • **sandyblonde rooted** • champagne mix



30

30



☆☆☆☆☆
Cometa

REMY HUMAN HAIR



Size: 13 x 16 cm • Length: 14 - 20 cm

espresso mix • darkchocolate mix • **chocolate mix** • mocca mix •
lightbernstein mix • sandyblonde mix • champagne mix



Cometa



☆☆☆☆) **Galaxy**

REMY HUMAN HAIR



Size: 18 x 20 cm • Length: 20 – 35 cm

espresso mix • darkchocolate mix • chocolate mix • mocca mix •
lightbernstein mix • **sandyblonde rooted** • champagne mix



Galaxy

☆☆☆☆☆
Effect

HIGH HEAT FIBER



Size: 17 x 17 cm • Length: 18 - 35 cm

espresso mix • darkchocolate mix • chocolate mix • mocca rooted •
bernstein rooted • caramel mix • sandyblonde rooted • champagne mix •
pearlblonde rooted • auburn rooted • stonegrey mix • snow mix

HI
HEAT
HIGH HEAT
FIBER

Effect

☆☆☆☆) **Matrix**

REMY HUMAN HAIR



Size: 17 x 18 cm • Length: 32 - 40 cm

espresso mix • darkchocolate mix • chocolate mix • mocca mix • sand mix •
sandyblonde rooted • champagne rooted

HH
HUMAN
HAIR



Matrix

☆☆☆☆)
Famous

REMY HUMAN HAIR



Size: 16 x 17 cm • Length: 30 – 38 cm

espresso mix • darkchocolate mix • chocolate mix • nougat rooted •
mocca mix • **lightbernstein rooted** • sandmulti rooted • sandyblonde mix •
champagne rooted • pearlblonde mix • naturewhite



Famous

☆☆☆☆
Dream

HIGH HEAT FIBER



Size: 15 x 14 cm • Length: 40 - 45 cm

espresso mix • darkchocolate mix • chocolate rooted • mocca rooted •
bernstein rooted • sand rooted • **sandyblonde rooted** • lightchampagne rooted •
salt/pepper mix • silver mix

HI
HEAT
HIGH HEAT
FIBER



Dream

☆☆☆☆)

Stream

HIGH HEAT FIBER



Size: 17 x 17 cm • Length: 40 - 45 cm

espresso rooted • darkchocolate mix • chocolate rooted • nougat mix •
bernstein rooted • sandyblonde rooted • pearlblonde rooted •
champagne rooted • metallicblonde rooted • cherryred rooted

HI
HEAT
HIGH HEAT
FIBER



Stream

☆☆☆☆☆)

Superb

REMY HUMAN HAIR



Size: 17 x 17 cm • Length: 34 - 44 cm

espresso mix • darkchocolate mix • chocolate rooted • nougat mix •
lightbernstein rooted • sandyblonde rooted • champagne rooted

Superb



☆☆☆☆☆
Finesse

HIGH HEAT FIBER



Size: 15 x 16 cm • Length: 50 - 57 cm

espresso mix • coffeebrown mix • chocolate rooted • nougat mix •
lightbernstein mix • caramel mix • sahara beige mix • sandyblonde rooted •
pastelblonde mix • auburn mix • **safranred rooted**

HI
HEAT
HIGH HEAT
FIBER



Finesse

De Die Advanced-Stage-Solutions sind die perfekte Lösung bei lichtem Haar. Diese Hair Topper bringen extra Fülle und vitales Volumen in den Bereich des Oberkopfes und der Seiten. Die Modelle fügen sich nahtlos und natürlich in das eigene Haar ein und bieten besonders hohen Tragekomfort dank hochwertigster Monturverarbeitung.

Es Las soluciones advanced-stage son perfectas para personas con poca densidad de cabello. Estos toppers capilares brindan plenitud extra y volumen en la parte superior así como en los lados de la cabeza. Los modelos se mezclan a la perfección y de forma natural con tu propio cabello y ofrecen un nivel de comodidad particularmente alto gracias a una montura de alta calidad.

It Advanced-stage solutions sono perfette per i capelli diradati. Questi topper aggiungono densità e volume nella parte superiore e laterale della testa. Si integrano perfettamente ai propri capelli donando maggior naturalezza e comfort grazie alla lavorazione della calotta di altissima qualità.

En The advanced-stage solutions are a perfect solution for fine and light hair. These hair toppers bring extra fullness and vital volume to the area of the top of the head and sides. The models blend seamlessly and naturally into your own hair and provide a particularly high wearing comfort thanks to its high quality workmanship.

Fr Ces volumateurs sont destinés aux personnes qui recherchent du volume sur le dessus de tête et les côtés. Ils restent invisibles et se fondent dans la chevelure au niveau du vertex et des tempes. Les modèles assurent un grand confort grâce au bonnet de finition de qualité supérieure.

Ru Advanced-stage solutions – идеальное решение для очень редких волос. Эти топперы для волос придают дополнительную густоту и естественный объём макушке и бокам головы. Они плавно и естественно сливаются с вашими собственными волосами и обеспечивают особенно высокий уровень комфорта благодаря высочайшему качеству изготовления.



Advanced

Advanced-stage Solutions

☆☆☆☆☆)

Orbit

REMY HUMAN HAIR



Size: 29 x 24 cm • Length: 28 - 34 cm

espresso mix • darkchocolate mix • chocolate mix • mocca rooted •
bernstein rooted • **sandyblonde rooted** • champagne rooted

S2

S3

Orbit



☆☆☆☆☆))
Secret Hi

HIGH HEAT FIBER



Size: 29 x 22 cm • Length: 28 – 36 cm

espresso mix • darkchocolate rooted • chocolate rooted •
mocca rooted • **bernstein rooted** • sandyblonde rooted • champagne rooted •
stonegrey rooted • silver mix

HI
HEAT
HIGH HEAT
FIBER

Secret
Hi

☆☆☆☆☆))

Lovely

HIGH HEAT FIBER



Size: 29 x 23 cm • Length: 12 – 30 cm

espresso mix • darkchocolate mix • chocolate rooted •
mocca rooted • lightbernstein rooted • sandmulti rooted • sandyblonde rooted •
pearlblonde rooted • champagne rooted

HI
HEAT
HIGH HEAT
FIBER



Lovely

☆☆☆☆☆))

Fizz

SYNTHETIC HAIR



Size: 29 x 22 cm • Length: 17 - 26 cm

espresso mix • darkchocolate rooted • chocolate mix • mocca rooted •
lightbernstein rooted • sand rooted • sandyblonde rooted • pastelblonde rooted •
lightchampagne rooted • stonegrey rooted • silver mix

Fizz

☆☆☆☆☆)

Ideal

REMY HUMAN HAIR



Size: 29 x 24 cm • Length: 12 - 16 cm

espresso mix • darkchocolate mix • chocolate mix • mocca mix •
bernstein mix • sand mix • sandyblonde rooted • champagne rooted



Ideal



Close

SYNTHETIC HAIR



Size: 29 x 22 cm • Length: 9 - 12 cm

chocolate mix • mocca mix • bernstein mix • darksand mix •
sand mix • champagne mix • salt/pepper mix • **smoke mix** • pearl mix • snow mix

SH
SYNTHETIC
HAIR

Close

Coverage

Hair Topper für feines, schütteres und lichtetes Haar in der Übersicht. Finden Sie die Top-Power-Lösung, die zu Ihnen passt.

Hair Topper for fine, thinning and balding hair at a glance. Find the Top Power solution that suits you.

Avec Top Power, trouvez la solution qui convient le mieux à vos cheveux fins ou clairsemés.

Hair topper para cabello fino, escaso y de poca densidad. Encuentra la solución capilar de Top Power que más te convenga en este catálogo.

Hair topper per capelli sottili e diradati. Qui troverà la soluzione top power più adatta.

Обзор всех моделей hair topper для тонких и редких волос. Найдите оптимальное решение по густоте и объёму, которое подходит именно вам.



Mid-stage

Moderate-stage Solutions

- Cometa** • page 32-33
- Dream** • page 42-43
- Effect** • page 36-37
- Famous** • page 40-41
- Finesse** • page 48-49
- Galaxy** • page 34-35
- Lace Top** • page 28-29
- Magic** • page 30-31
- Matrix** • page 38-39
- Real** • page 26-27
- Stream** • page 44-45
- Superb** • page 46-47
- Top Mono** • page 24-25
- Value** • page 22-23

64



Beginning

Early-stage Solutions

- Add In** • page 6-7
- Couture** • page 16-17
- Fill In** • page 14-15
- Fun** • page 18-19
- Impact** • page 12-13
- Just** • page 8-9
- Just Long** • page 10-11

Advanced

Advanced-stage Solutions

- Close** • page 62-63
- Fizz** • page 58-59
- Ideal** • page 60-61
- Lovely** • page 56-57
- Orbit** • page 52-53
- Secret Hi** • page 54-55



65

Quality

☆☆☆☆

Monofilament + Tresse
Monofilament + wefted
Monofilament + tresses
Monofilamento + lavorata a macchina
Monofilamento + tejida a máquina
Монофиламент + трессы

☆☆☆☆☆

100 % handgeknüpft
100 % handmade
100 % fait main
100 % fatta a mano
100 % anudada a mano
100 % ручная работа

☆☆☆☆☆☆

Monofilament + 100 % handgeknüpft
Monofilament + 100 % handmade
Monofilament + 100 % fait main
Monofilamento + 100 % fatta a mano
Monofilamento + 100 % anudada a mano
Монофиламент + 100 % ручная работа

⌋

Filmansatz
Lace front
Bordure invisible
Tulle Cinema
Tul frontal
Невидимая фронтальная линия

⌋⌋

Erweiterter Filmansatz
Extended lace front
Bordure invisible extra-longue
Tulle Cinema prolungato
Tul frontal alargado
Удлиненная фронтальная линия

mix

Modische Farbmischung und Strähnung
Fashionable colour blend and high/lowlights
Effet méché dans des coloris tendance
Miscela di tonalità diverse alla moda
Mezcla de colores y mechas de moda
Модный микс цветов и мелирование

rooted

Natürliche Ansatzfarbgebung
Naturally rooted colours
Effet racine dans un ton plus foncé
Effetto ricrescita: la base delle meche è scura
Raíz naturalmente más oscura
Эффект отросших корней

HI
HEAT
HIGH HEAT
FIBER

De High-Heat-Fasern sind modernes, hitzeresistentes Kunsthaar. Ebenso wie Synthetic Hair sind sie pflegeleicht und „ready-to-wear“. Außerdem können sie bei fachgerechter Anwendung mit Friseurutensilien wie Glätteisen, Lockenstab oder dem Föhn nach eigenen Wünschen permanent umgestylt werden. Unsere High-Heat-Modelle verbinden Qualität mit Flexibilität.

En High Heat fiber is a modern, heat-resistant synthetic hair. Just like synthetic hair, these models are easy to care for and ready-to-wear. They can be permanently restyled with styling tools such as straighteners, curlers or a hair dryer according to your own wishes. Our high-heat range combines quality with flexibility.

SH
SYNTHETIC
HAIR

De Kunsthaar ist pflegeleicht und sieht natürlich aus. Es ist in einer großen Auswahl von Farben verfügbar. Neue Looks im Handumdrehen. Unsere Synthetic-Hair-Topper sind unkomplizierte „ready-to-wear“-Lösungen für mehr Volumen.

En Synthetic hair is easy to care for and looks natural. It is available in a wide range of colours. New looks in no time. Our synthetic hair toppers are uncomplicated ready-to-wear solutions for more volume.

PH
PRIME
HAIR

De Prime Hair ist ein innovativer Mix aus High-Heat-Fasern und hochwertigem Echthaar. Es vereint die Vorteile der beiden Haartypen. Der Prime-Hair-Mix ist leicht, flexibel und bleibt durch seinen Memory-Effekt bestens in Form. Unsere Prime-Hair-Faser schafft Inspiration aus Innovation.

En Prime Hair is an innovative mix of high-heat fiber and high-quality human hair. It combines the advantages of both hair types. The Prime Hair mix is light, flexible and keeps its shape perfectly thanks to its memory effect. Our Prime Hair collection creates inspiration from innovation.

HH
HUMAN
HAIR

De Unsere Hair Topper aus Echthaar verfügen über natürlichen Glanz, sind seidenweich und ergänzen eigenes Haar ideal. Sie lassen sich föhnen und mit dem Glätteisen stylen. Für die Top-Power-Modelle verwenden wir hochwertiges Remy Human Hair. Unsere Hair Topper sind wahr gewordene Echthaarträume.

En Our human hair toppers have a natural shine, are silky soft and complement your own hair perfectly. They can be blow-dried and styled with a straightening iron. Our Top Power models are made of high-quality Remy Human Hair. Human hair dreams come true.



Overview

SYNTHETIC HAIR

SH SYNTHETIC HAIR

HIGH HEAT FIBER



HIGH HEAT
FIBER



Close ★★★★★)

chocolate mix • mocca mix • bernstein mix • darksand mix • sand mix • champagne mix • salt/pepper mix • **smoke mix** • pearl mix • snow mix

Size: 29x22 cm • Length: 9 - 12 cm

Page
62



Fizz ★★★★★))

espresso mix • darkchocolate rooted • chocolate mix • mocca rooted • lightbernstein rooted • sand rooted • sandyblonde rooted • pastelblonde rooted • **lightchampagne rooted** • stonegrey rooted • silver mix

Size: 29 x 22 cm • Length: 17 - 26 cm

Page
58



Lace Top ★★★★★)

espresso mix • chocolate mix • nougat rooted • mocca rooted • **bernstein rooted** • caramel rooted • **sandyblonde rooted** • champagne rooted • **auburn rooted** • stonegrey mix • **pearl mix** • silver mix

Size: 16 x 16 cm • Length: 10 - 14 cm

Page
28



Top Mono ★★★★★

espresso mix • chocolate mix • bernstein mix • sand mix • caramel mix • champagne mix • **smoke mix** • snow mix • silver mix

Size: 17x16 cm • Length: 12 - 14 cm

Page
24

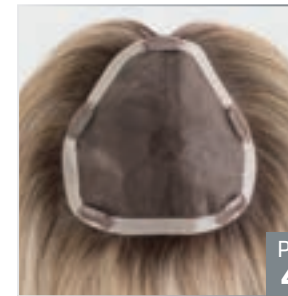


Couture ★★★★★)

espresso mix • darkchocolate mix • chocolate rooted • mocca rooted • lightbernstein rooted • sandyblonde rooted • pearlblonde rooted • **lightchampagne rooted** • auburn rooted • salt/pepper mix • silver mix

Size: 7x17 cm • Length: 28 - 30 cm

Page
16



Dream ★★★★★

espresso mix • darkchocolate mix • chocolate rooted • mocca rooted • bernstein rooted • sand rooted • **sandyblonde rooted** • lightchampagne rooted • salt/pepper mix • silver mix

Size: 15x14 cm • Length: 40 - 45 cm

Page
42

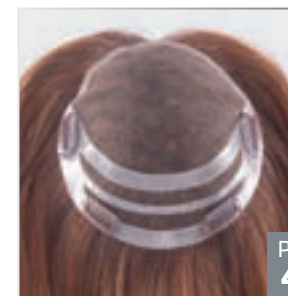


Effect ★★★★★)

espresso mix • darkchocolate mix • chocolate mix • mocca rooted • **bernstein rooted** • caramel mix • sandyblonde rooted • **champagne mix** • pearlblonde rooted • auburn rooted • **stonegrey mix** • **snow mix**

Size: 17 x 17 cm • Length: 18 - 35 cm

Page
36

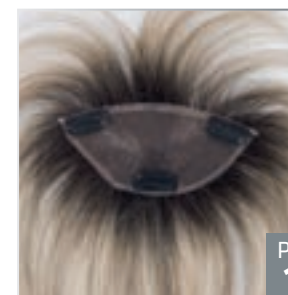


Finesse ★★★★★

espresso mix • coffeebrown mix • chocolate rooted • nougat mix • lightbernstein mix • caramel mix • sahara beige mix • sandyblonde rooted • pastelblonde mix • auburn mix • **safranred rooted**

Size: 15x16 cm • Length: 50 - 57 cm

Page
48



Fun ★★★★★

black • espresso mix • darkchocolate mix • chocolate mix • mocca rooted • lightbernstein rooted • **sandmulti rooted** • **sahara beige mix** • sandyblonde rooted • champagne rooted • **pastelblonde mix** • auburn rooted • **salt/pepper mix** • **stonegrey mix** • pearl rooted • **snow mix** • white mix

Size: 13x6 cm • Length: 12 - 24 cm

Page
18

HIGH HEAT FIBER



HIGH HEAT FIBER

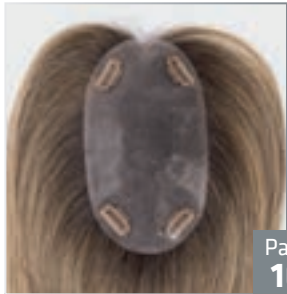


Just ★★★★★)

espresso mix • darkchocolate mix • chocolate mix • mocca mix • bernstein rooted • sand mix • **sandyblonde rooted** • pearlblonde mix • champagne mix • **auburn rooted** • **salt/pepper mix** • **stonegrey mix** • **pearl rooted** • silver mix

Size: 8 x 14 cm • Length: 23 – 26 cm

Page 08



Just Long ★★★★★)

espresso mix • darkchocolate mix • chocolate mix • mocca mix • **bernstein rooted** • sand mix • sandyblonde rooted • pearlblonde mix • champagne mix • **auburn rooted** • **salt/pepper mix** • **stonegrey mix** • **pearl rooted** • **silver mix**

Size: 8 x 14 cm • Length: 38 – 40 cm

Page 10



Lovely ★★★★★))

espresso mix • darkchocolate mix • chocolate rooted • mocca rooted • lightbernstein rooted • sandmulti rooted • sandyblonde rooted • pearlblonde rooted • **champagne rooted**

Size: 29 x 23 cm • Length: 12 – 30 cm

Page 56

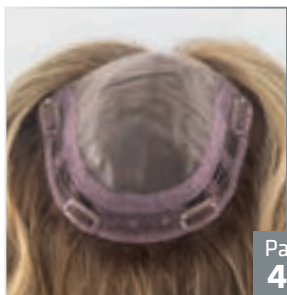


Secret Hi ★★★★★))

espresso mix • darkchocolate rooted • chocolate rooted • mocca rooted • **bernstein rooted** • sandyblonde rooted • champagne rooted • stonegrey rooted • silver mix

Size: 29 x 22 cm • Length: 28 – 36 cm

Page 54



Stream ★★★★★)

espresso rooted • darkchocolate mix • chocolate rooted • nougat mix • **bernstein rooted** • sandyblonde rooted • pearlblonde rooted • champagne rooted • metallicblonde rooted • cherryred rooted

Size: 17 x 17 cm • Length: 40 – 45 cm

Page 44

HUMAN HAIR



HUMAN HAIR

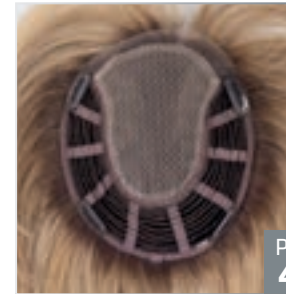


Add In ★★★★★

espresso mix • darkchocolate mix • **chocolate mix** • mocca mix • bernstein rooted • sand rooted • sandyblonde rooted • champagne mix

Size: 7 x 16 cm • Length: 30 – 38 cm

Page 06

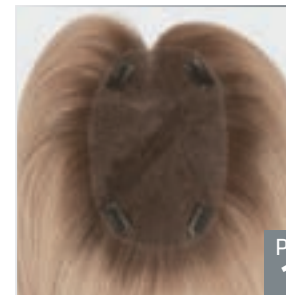


Famous ★★★★★)

espresso mix • darkchocolate mix • chocolate mix • nougat rooted • mocca mix • **lightbernstein rooted** • **sandmulti rooted** • sandyblonde mix • champagne rooted • **pearlblonde mix** • **naturewhite**

Size: 16 x 17 cm • Length: 30 – 38 cm

Page 40



Fill In ★★★★★)

espresso mix • darkchocolate mix • chocolate mix • mocca mix • bernstein rooted • sand mix • **sandyblonde rooted** • champagne rooted

Size: 8 x 14 cm • Length: 26 – 28 cm

Page 14

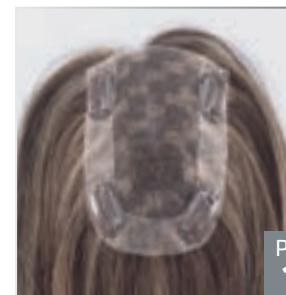


Ideal ★★★★★)

espresso mix • darkchocolate mix • chocolate mix • mocca mix • bernstein mix • sand mix • sandyblonde rooted • **champagne rooted**

Size: 29 x 24 cm • Length: 12 – 16 cm

Page 60



Impact ★★★★★)

black • espresso mix • darkchocolate mix • chocolate rooted • **nougat mix** • bernstein rooted • sandyblonde rooted • champagne rooted • pastelblonde mix • dark winered mix

Size: 9 x 13 cm • Length: 40 – 45 cm

Page 12

HUMAN HAIR

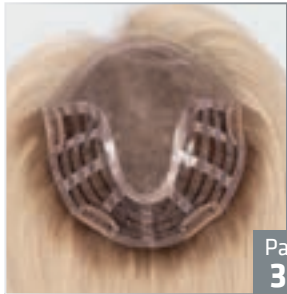


Magic ☆☆☆☆)

espresso mix • darkchocolate mix • chocolate mix • mocca mix • lightbernstein rooted • **sandyblonde rooted** • champagne mix

Size: 14 x 17 cm • Length: 20 – 23 cm

Page 30



Matrix ☆☆☆☆)

espresso mix • darkchocolate mix • chocolate mix • mocca mix • sand mix • sandyblonde rooted • **champagne rooted**

Size: 17 x 18 cm • Length: 32 – 40 cm

Page 38



Orbit ☆☆☆☆)

espresso mix • darkchocolate mix • chocolate mix • mocca rooted • bernstein rooted • **sandyblonde rooted** • champagne rooted

Size: 29 x 24 cm • Length: 28 – 34 cm

Page 52



Superb ☆☆☆☆☆)

espresso mix • darkchocolate mix • chocolate rooted • nougat mix • **lightbernstein rooted** • sandyblonde rooted • champagne rooted

Size: 17 x 17 cm • Length: 34 – 44 cm

Page 46



Value ☆☆☆☆☆)

espresso mix • darkchocolate mix • chocolate mix • mocca mix • lightbernstein rooted • sand mix • **sandyblonde rooted** • champagne rooted

Size: 17 x 17 cm • Length: 12 – 16 cm

Page 22

EUROPEAN HUMAN HAIR

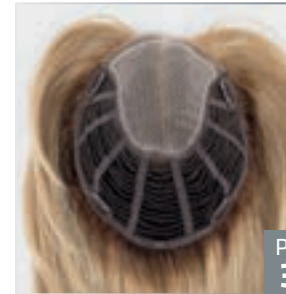


Cometa ☆☆☆☆)

espresso mix • darkchocolate mix • **chocolate mix** • mocca mix • lightbernstein mix • sandyblonde mix • champagne mix

Size: 13 x 16 cm • Length: 14 – 20 cm

Page 32



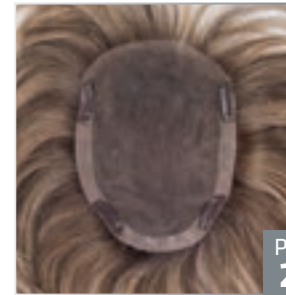
Galaxy ☆☆☆☆)

espresso mix • darkchocolate mix • chocolate mix • mocca mix • lightbernstein mix • **sandyblonde rooted** • champagne mix

Size: 18 x 20 cm • Length: 20 – 35 cm

Page 34

PRIME HAIR



Real ☆☆☆☆)

espresso mix • darkchocolate mix • chocolate mix • **bernstein rooted** • sand mix • champagne rooted • smoke mix • naturewhite mix

Size: 13 x 17 cm • Length: 16 – 20 cm

Page 26



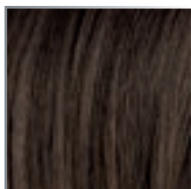
Many new colours available!
New colour options are [highlighted in blue](#).

Colours

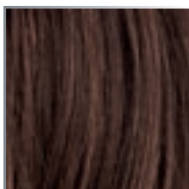
SYNTHETIC HAIR



black
1.2



espresso
4.2



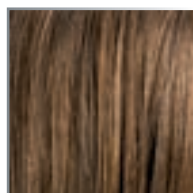
darkchocolate
6.33.4



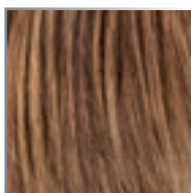
coffeebrown
6.8.4



chocolate
830.6



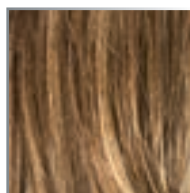
nougat
8.12.20



mocca
830.12.27



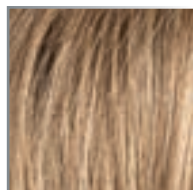
bernstein
12.26.19



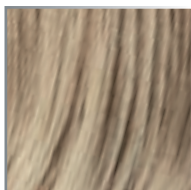
lightbernstein
12.26.27



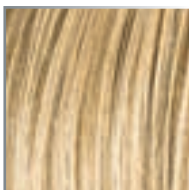
darksand
12.20.22



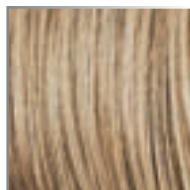
sand
14.26.20



sandmulti
14.22.12



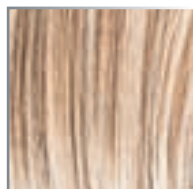
caramel
20.14.26



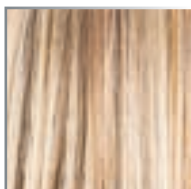
sahara beige
26.20.25



sandyblonde
16.22.20



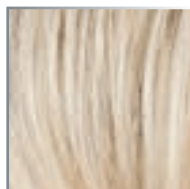
pearlblonde
101.20.25



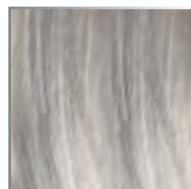
champagne
22.26.20



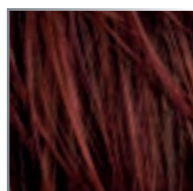
pastelblonde
25.23.22



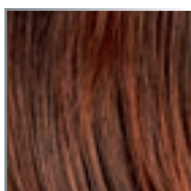
lightchampagne
23.25.24



metallicblonde
101.60.51



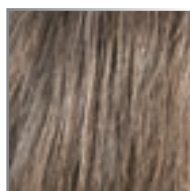
cherryred
133.33



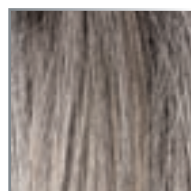
auburn
33.130.4



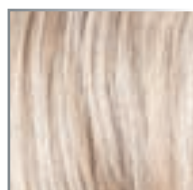
salt/pepper
39.51.60



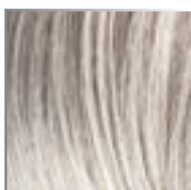
smoke
48.38.36



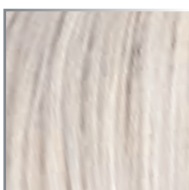
stonegrey
48.56



pearl
101.14



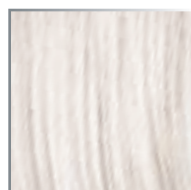
snow
60.56.58



silver
60.56



naturewhite
60.101



white
60